



Leeds
Neighbourhood
Index

Key Drivers

- To make information more accessible and improve understanding of issues affecting neighbourhoods across the City
- To develop a shared understanding of neighbourhood needs between partners
- To provide a robust evidence based approach to formulating policies and allocating resources
- To improve performance management at a local level by monitoring the impact of key services on a range of agreed indicators

Aims

- To develop an Index to:
 - provide an overall picture of the relative 'health' of all neighbourhoods across the city
 - be used to measure the relative success of neighbourhoods across the city over time
 - provide a mechanism to measure the combined impact of interventions in a local area

Defining the Neighbourhoods

Middle Super Output Areas (MSOAs) have been used as the basis for the Index. **There are 108 MSOAs in the city.**

- They provide a “ready made” set of boundaries for which a range of data is easily available
- They are recognised by all partner agencies
- They are of a comparable size in terms of population (each containing approximately 7,000 people)
- They meet Government guidance that a “neighbourhood” should contain between 5,000 to 10,000 people

Structure of the Index

- A multiple domain and indicator based Index
- Reports on a basket of indicators (26 in total) grouped into 7 domains
- Generates a neighbourhood score for each indicator and for each domain which can be compared to the averages for the city
- Generates a combined single Neighbourhood Index score

Domains and Indicators

<p>Economic Activity: Job Seekers Allowance, Income Support (Lone Parents) Incapacity Benefit</p>	<p>Health: Circulatory Disease Mortality (under 75s) Cancer Mortality (under 75s) Low Birthweight</p>
<p>Low Income: Children in workless households Working households claiming LCC benefits Older age households claiming LCC benefits Debt (count of LCC liability orders)</p>	<p>Education: Persistent absenteeism Foundation Stage attainment KS2 attainment KS4 attainment NEETs</p>
<p>Housing: Average house prices Price to Income Ratio Housing turnover Empty properties</p>	<p>Community Safety: Crimes against individuals Acquisitive property crime Environmental property crime & disorder Other Community Disorders</p>
<p>Environment: Flytipping Graffiti Waste Issues</p>	

Outputs

- The production of an annual set of neighbourhood profiles to an agreed template
- Set of city-wide maps (an Atlas of Local Conditions)
- Set of tables showing the comparative position of neighbourhoods across the range of indicators and within each domain
- An “Annual Report” providing commentary on the results

Sample Area Profile



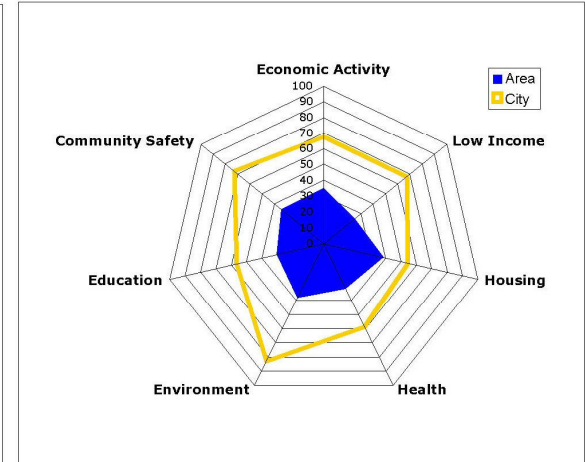
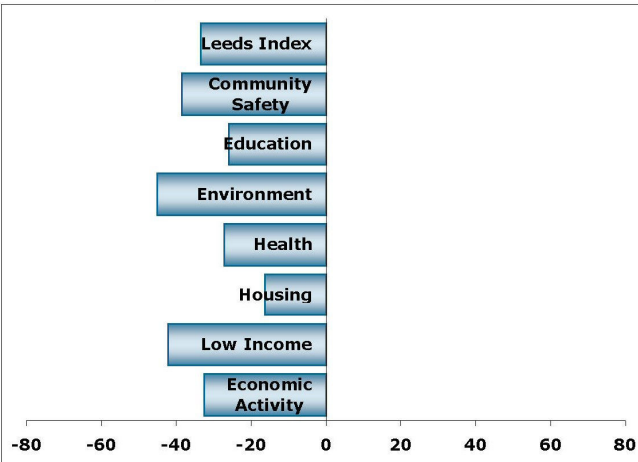
Leeds Neighbourhood Index

Domain Summary				
2009	Rank	Score	Leeds Score	Gap
Economic Activity	16	34.86	67.44	-32.58
Low Income	9	25.11	67.29	-42.18
Housing	12	38.37	54.69	-16.32
Health	10	31.60	58.78	-27.18
Environment	5	37.92	83.05	-45.14
Education	16	30.45	56.46	-26.01
Community Safety	2	34.35	72.93	-38.59
Leeds Index	5	32.29	65.73	-33.44

Key Statistics	Profiled Area		Leeds M.D.	
	Number	Rate	Number	Rate
Population 2007 MYE	8,249		761,124	
Households Liable for Council Tax	3,439		313,816	
BME Population	1,146	14.72%	77,482	10.83%
Foundation Stage	18	23.08%	3,509	46.81%
Key Stage 2	64	69.57%	5,421	71.06%
Key Stage 4	15	19.23%	3,736	46.29%
Persistent Absenteeism	64	16.08%	3,083	8.13%
NET	6	8.00%	567	6.94%
Crimes Against the Person	592	N/A	27,907	N/A
Acquisitive Property Crime	797	N/A	47,201	N/A
Environmental Crimes	364	N/A	17,557	N/A
Community Disorders	1,223	N/A	54,672	N/A
Average Purchase Price	£126,100	N/A	£178,400	N/A
Price / Income Ratio	4.40	N/A	5.20	N/A
Housing Turnover	693	18.50%	42,360	12.80%
Empty Homes (90+ days)	414	11.05%	22,907	6.92%
Children in Workless Households	509	34.86%	24,034	18.04%
Households Receiving In-Work Benefits	243	7.07%	10,774	3.43%
60+ Households in Receipt of Benefits	511	14.86%	33,358	10.63%
Court Payment Orders	396	N/A	20,724	N/A
Job Seekers' Allowance	460	8.24%	23,281	4.66%
Incapacity Benefit	585	10.47%	30,120	6.03%
Lone Parent Income Support	230	4.12%	9,500	1.90%
Circulatory Disease Mortality	N/A	138.59	N/A	87.81
Cancer Mortality	N/A	176.44	N/A	119.43
Low Birthweight	N/A	10.53	N/A	8.07
Fly Tipping	238	N/A	9,656	N/A
Graffiti	77	N/A	2,465	N/A
Waste Issues	245	N/A	5,321	N/A

Ethnicity (2001 Census)	Profiled Area		Leeds M.D.	
	Number	Rate	Number	Rate
White British	6,638	85.28%	637,872	89.17%
Irish	110	1.41%	8,532	1.19%
Black Caribbean & White	91	1.17%	4,577	0.64%
Black African & White	11	0.14%	867	0.12%
Asian & White	27	0.35%	2,541	0.36%
Indian	135	1.73%	12,296	1.72%
Pakistani	455	5.85%	15,064	2.11%
Bangladeshi	14	0.18%	2,531	0.35%
Black Caribbean	69	0.89%	6,737	0.94%
Black African	16	0.21%	2,404	0.34%
Chinese	26	0.33%	3,468	0.48%

E02002400: Armley, New Wortley

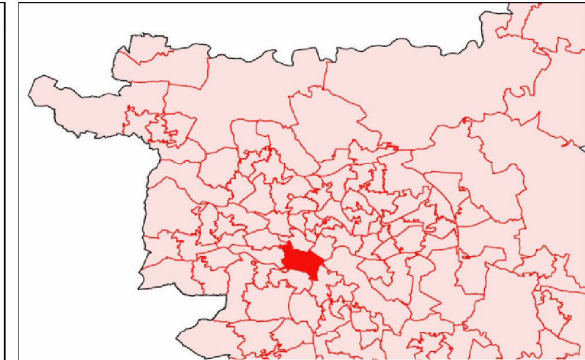


The area is located in the Inner West and is adjacent to the City Centre. The populated area is bounded by the canal to the north and Tong Road to the south and stretches across from New Wortley to Armley Moor Top. The River Aire and the Leeds / Liverpool Canal run through this area.

It contains approximately 8,000 people living in 3,700 households. The age breakdown broadly reflects the averages for the city. The area has a diverse ethnic population with 15% of people coming from BME communities.

40% of households are renting from the local authority (through an ALMO) and 37% are in owner-occupation. Terraced housing accounts for 58% of the stock and purpose built flats for a further 25%. 93% of properties are classified in Council Tax Band A.

Key services located in the area include: St Bartholomews C of E Primary, Castleton Primary, Five Lane Ends Primary, Wortley High School, Armley Library (nearest), Armley Post Office and Wortley Post Office, Armley Mills.



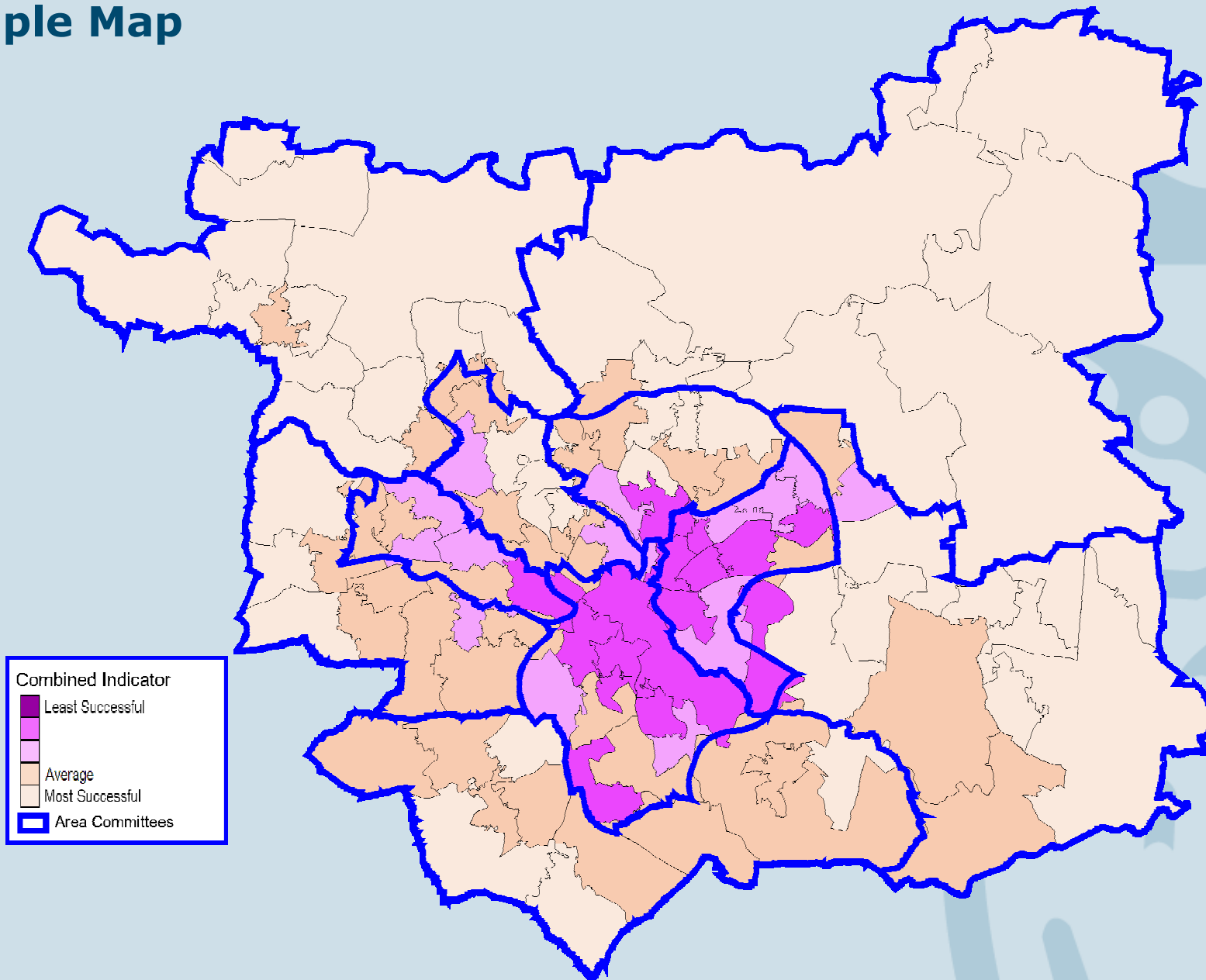
Faith (2001 Census)	Profiled Area		Leeds M.D.	
	Number	Rate	Number	Rate
Christian	4,647	59.63%	492,656	68.87%
Buddhist	9	0.12%	1,603	0.22%
Hindu	47	0.60%	4,189	0.59%
Jewish	16	0.21%	8,233	1.15%
Muslim	520	6.67%	21,385	2.99%
Sikh	87	1.12%	7,601	1.06%

Disability (2001 Census)	Profiled Area		Leeds MD	
	Number	Rate	Number	Rate
Limiting Long-Term Illness	1,762	22.62%	128,647	17.98%

Adult Social Care Community Based Service Users	Profiled Area		Leeds MD	
	Number	Rate	Number	Rate
Learning Disabilities	20	N/A	1,379	N/A
Mental Health	31	N/A	2,067	N/A
Physical Disability	82	N/A	8,141	N/A
Other Reasons	13	N/A	688	N/A

Age (2007 M.Y.E.)	Profiled Area		Leeds MD	
	Number	Rate	Number	Rate
Children	1,460	17.70%	133,217	17.50%
Working Age	5,585	67.71%	499,422	65.62%
Older People	1,204	14.60%	128,485	16.88%

Sample Map



Inner West

On a best fit basis the Inner West area contains 7 MSOAs

The following slides show the ranked positions of each MSOA in Inner West within each domain, highlighting those with significantly poorer outcomes

Leeds Index

Significantly poorer outcomes

- Armley / New Wortley
- Broadleas / Ganners / Sandfords
- Bramley Hill Top / Raynville / Wyther Park
- Bramley

Average or better

- Upper Armley
- Stanningley / Rodley
- Bramley Whitecote

5

24

25

29

32

52

53

Community Safety Domain

Significantly poorer outcomes

- Armley / New Wortley
- Bramley Hill Top / Raynville / Wyther Park
- Upper Armley
- Broadleas / Ganners / Sandfords
- Bramley

Average or better

- Stanningley / Rodley
- Bramley Whitecote



2
21
22
26
31

61
88

Economic Activity Domain

Significantly poorer outcomes

- Armley / New Wortley
- Bramley
- Bramley Hill Top / Raynville / Wyther Park
- Broadleas / Ganners / Sandfords

Average or better

- Upper Armley
- Stanningley / Rodley
- Bramley Whitecote

16

26

28

29

35

48

51

Education Domain

Significantly poorer outcomes

- Broadleas / Ganners / Sandfords
- Armley / New Wortley
- Bramley Hill Top / Raynville / Wyther Park
- Bramley

Average or better

- Upper Armley
- Stanningley / Rodley
- Bramley Whitecote

8

16

21

26

42

56

58

Environment Domain

Significantly poorer outcomes

- Armley / New Wortley
- Upper Armley

Average or better

- Bramley Hill Top / Raynville / Wyther Park
- Bramley
- Stanningley / Rodley
- Broadleas / Ganners / Sandfords
- Bramley Whitecote

3

8

24

35

55

58

82

Health Domain

Significantly poorer outcomes

- Broadleas / Ganners / Sandfords
- Armley / New Wortley
- Bramley
- Bramley Hill Top / Raynville / Wyther Park
- Bramley Whitecote

Average or better

- Upper Armley
- Stanningley / Rodley

7

10

22

24

27

43

78

Housing Domain

Significantly poorer outcomes

- Armley / New Wortley
- Upper Armley

Average or better

- Stanningley / Rodley
- Bramley Hill Top / Raynville / Wyther Park
- Bramley
- Broadleas / Ganners / Sandfords
- Bramley Whitecote

12

17

28

30

47

50

54

Low Income Domain

Significantly poorer outcomes

- Armley / New Wortley
- Broadleas / Ganners / Sandfords
- Bramley Hill Top / Raynville / Wyther Park

Average or better

- Bramley
- Upper Armley
- Stanningley / Rodley
- Bramley Whitecote



9
24
25
30
37
56
60

Using the Neighbourhood Index

- Standard outputs to meet growing demand for small area data to better describe and understand neighbourhoods
- 'Tin opener' for other studies / research
- Evidence base to inform policy formulation, priority setting and resource allocation
- Improving performance management by monitoring impact of key services on a locality

Forward Work Programme

- Gather feedback / evaluate the original outputs
- Reformatting the area profiles (improving the map and incorporating time series / direction of travel information)
- Explore the feasibility of including additional indicators (particularly in the Economic Activity, Environment and Health domains)
- Annual data refresh (summer 2010)